

**MJF COLLEGE OF VETERINARY AND ANIMAL SCIENCE,
CHOMU, JAIPUR**



DEPARTMENT OF VETERINARY PATHOLOGY

GOUT

ETIOLOGY

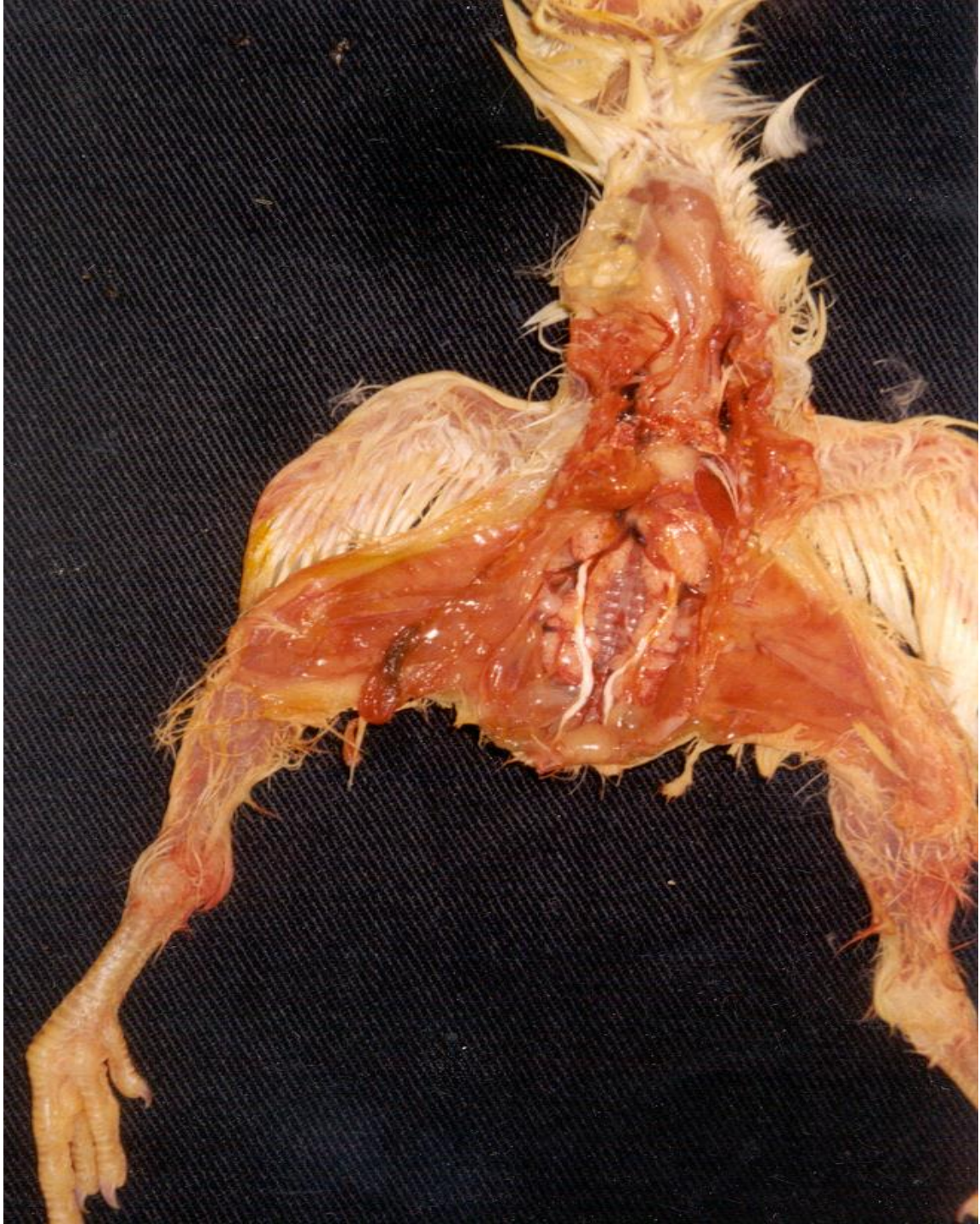
- **Inheritance**
- **Multifactor**
- **Deficiency of uricase enzyme**
- **High protein diet**
- **Deficiency of Vitamin A**

GOUT

Species:

Man and poultry

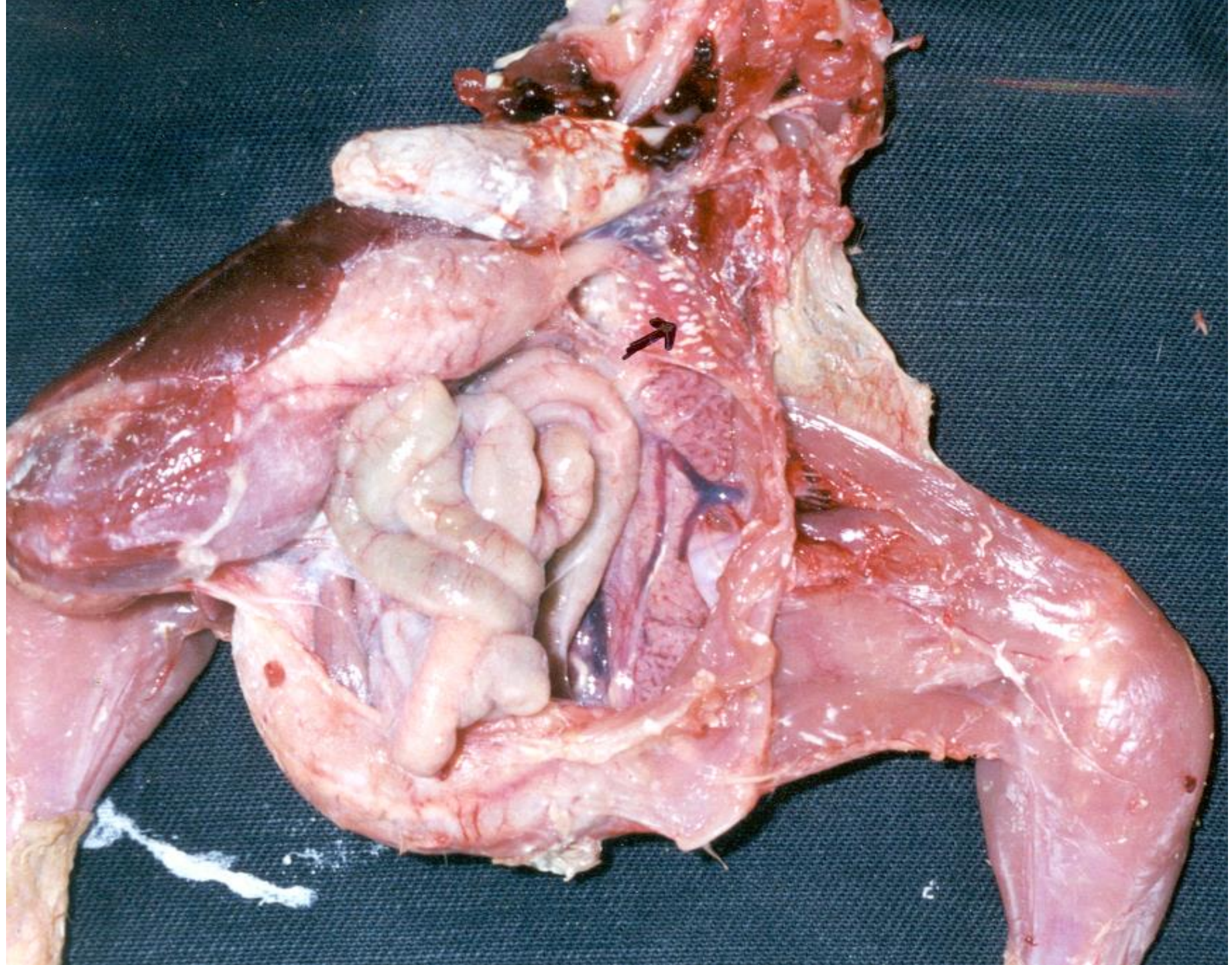






A

B







PATHOLOGICAL LESIONS

Microscopic lesions

