



HORSE COLORS AND MARKINGS

Outline

- Horse Colors
- Horse Markings
 - Facial Markings
 - Leg Markings
 - Other Markings
- View some horses in the arena/barn/fields

Buckskin



Bay



Black



Chestnut



Grey



Dapple Grey



Red Roan



Basic Pinto Colors

Tobiano



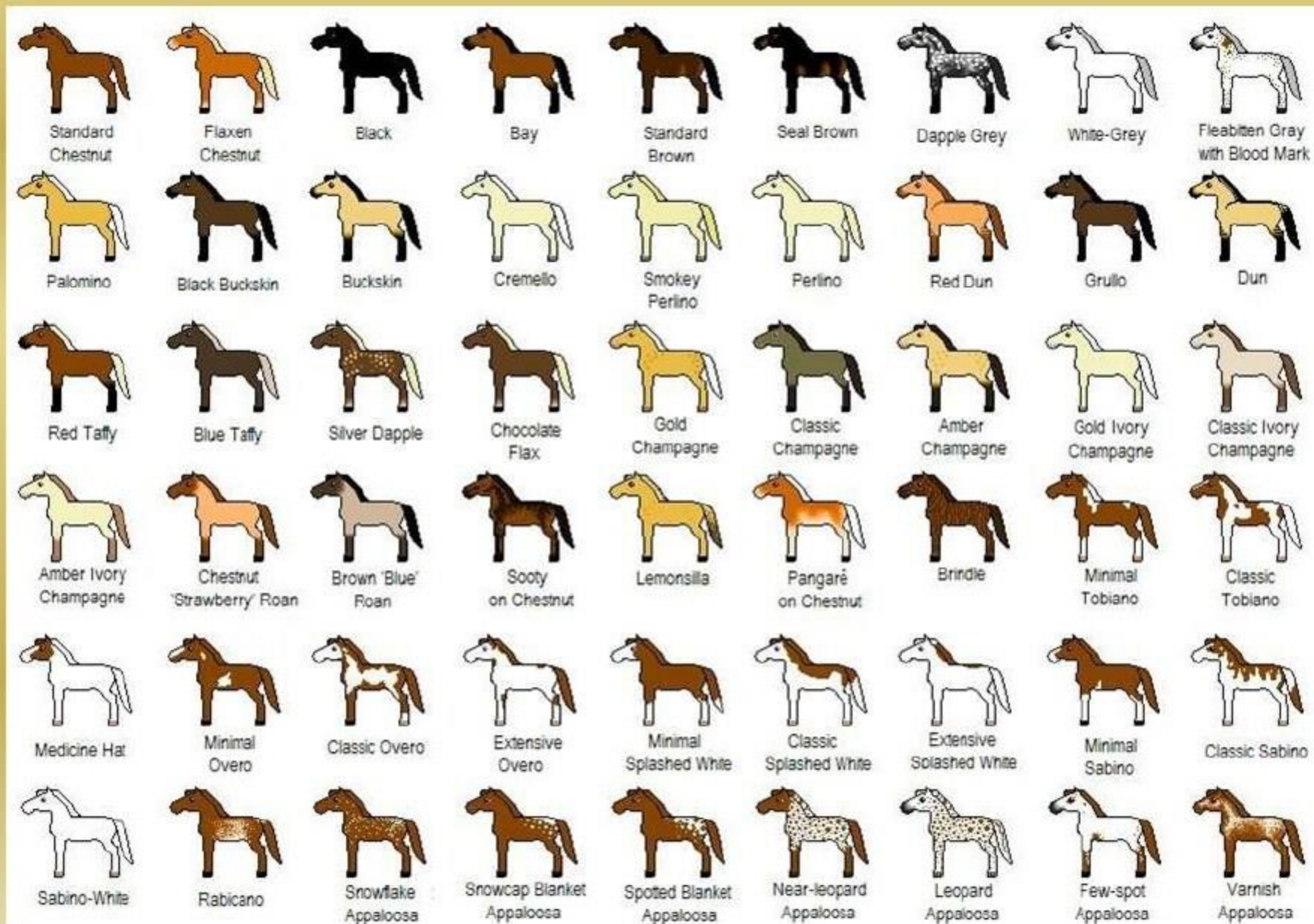
Overo



Sorrell



Various Horse Colors (Are you kidding me?)



Horse Markings

- Facial Markings



- Leg Markings



- Other Markings



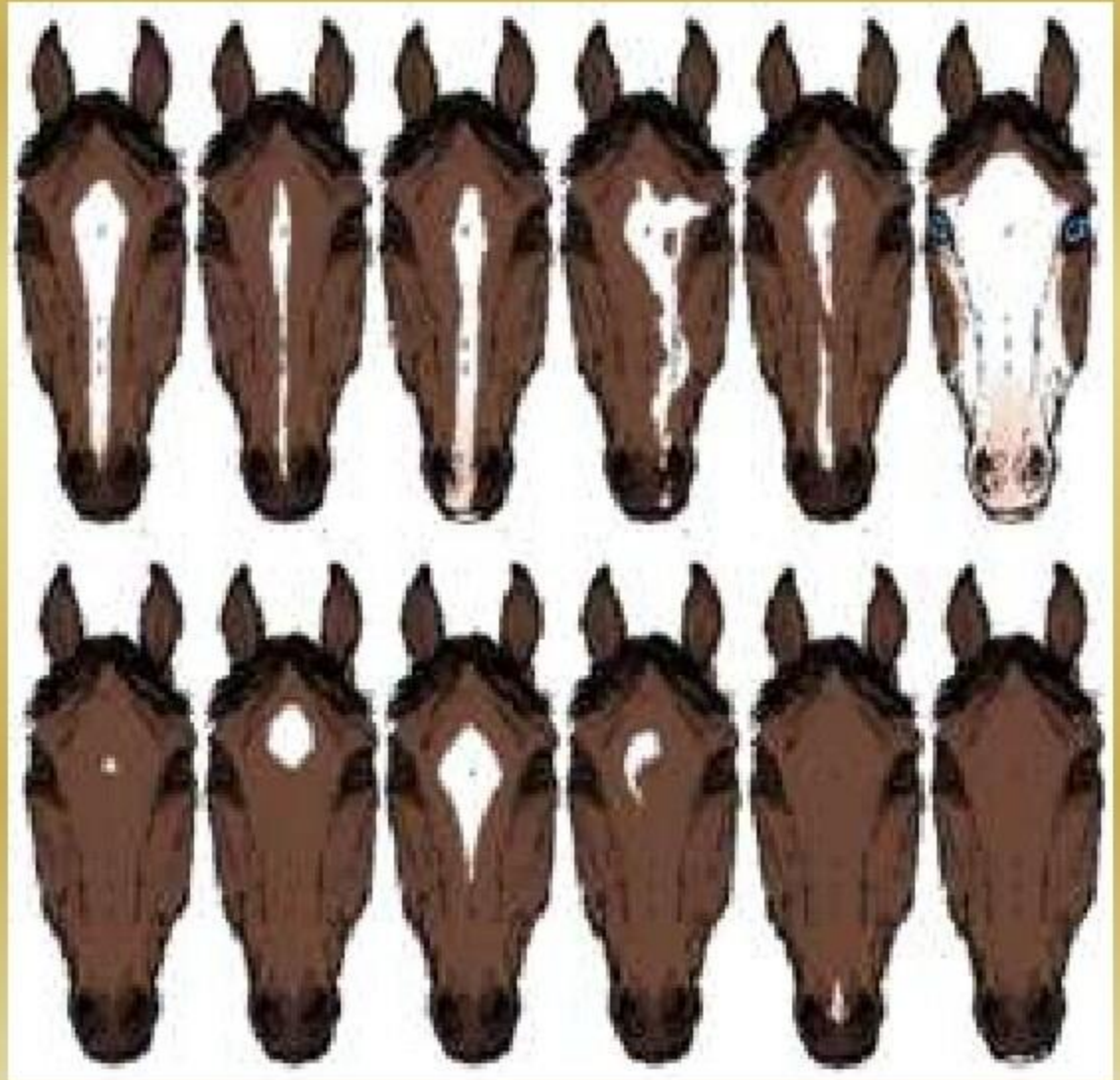
Facial Markings

TOP ROW (Left to Right)

- Blaze - wide patch the width of the nasal bones
- Stripe – narrow patch forehead to muzzle
- Stripe and Snip or Thin Blaze
- Irregular Blaze
- Interrupted Stripe
- Bald face- marking covering front and extending over the sides

BOTTOM ROW (Left to Right)

- Faint star
- Star – white mark on forehead
- Star and stripe
- Irregular star
- Snip – narrow patch over muzzle
- Lip marking



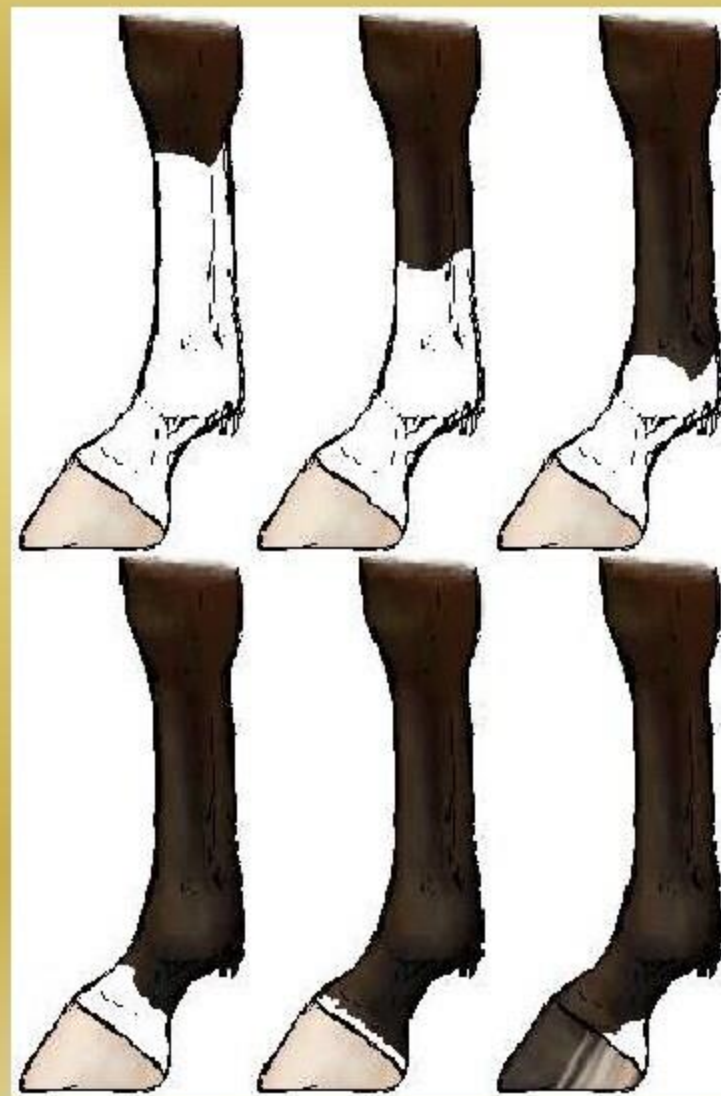
Leg Markings

TOP ROW (Left to Right)

- Stocking - white from coronet to knee
- Sock or Half Stocking or Boot- white from coronet to middle of the cannon bone
- Fetlock or Sock or Anklet (includes fetlock)

BOTTOM ROW (Left to Right)

- Pastern - white from coronet to the pastern
- Coronet - white strip covering coronet
- Partial Pastern



Leg Markings (continued)



Ermine marks: The occurrence of black marks on a white marking. Most often seen on leg markings just above the hoof

Other Markings

- Branding



Hot Brand



Freeze Brand

- Bend or Spots



Bend or Spot on a Palomino



Belly Spot

Some Horse Marking Examples

bald face



blaze snip and lip marking



star



coronet



stockings



sock and fetlock