

Breeds of Hogs

Dr. Prashant Saharan

Assistant Professor

Dept. Of LPM

MJFCVS chomu

Breeds of Hogs

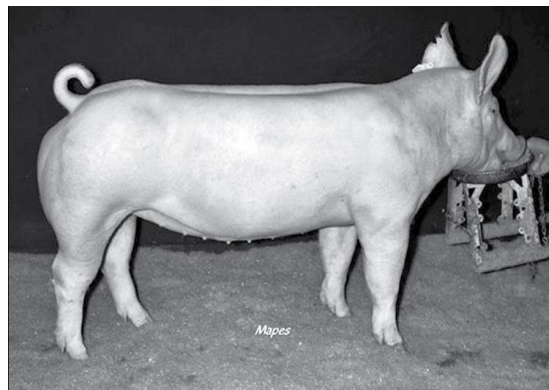
- White vs. dark breeds



- Maternal vs. Terminal breeds

Breed Identifiers

- Color
 - Watch for “points”
- Head
 - Ears



Important breeds of Pig

- **BERKSHIRE**
- Developed in England
- Came to U.S. in 1823
- Medium size hog
- **Erect ears**, short snout
- 6 white points

- **CHESTER WHITE**
- Developed in PA.
- Drooped ears
- Known for mothering ability

- **DUROC**
- Developed in eastern U.S.
- Drooped ears
- Red in color
- One of the most popular breeds in U.S.

- **HAMPSHIRE**
- Developed in England
- Erect ears
- White band circling the body
- Known for lean meat

- **POLAND CHINA**
- Developed in Ohio
- Black with six white points
- Drooping ears
- One of the larger breeds of hogs
- Used in cross breeding programs

- **SPOTTED BREED**
- Developed in Indiana
- At least 20% of body must be either black or white
- First known as the Spotted Poland China

- **TAMWORTH:**
- Originated in England
- Brought to U.S. in 1882
- Red in color
- Lean meat
- **Excellent mothering**
ability

- **YORKSHIRE**
- Developed in England
- Came to U.S. in 1800s
- **Erect ears**
- Sometimes has **black freckles**

- **AMERICAN LANDRACE**
- Developed around 1895
- Long body length
- Ears large and drooping
- Sows noted for good milk production