

DEPARTMENT
OF
LIVESTOCK PRODUCTION MANAGEMNT

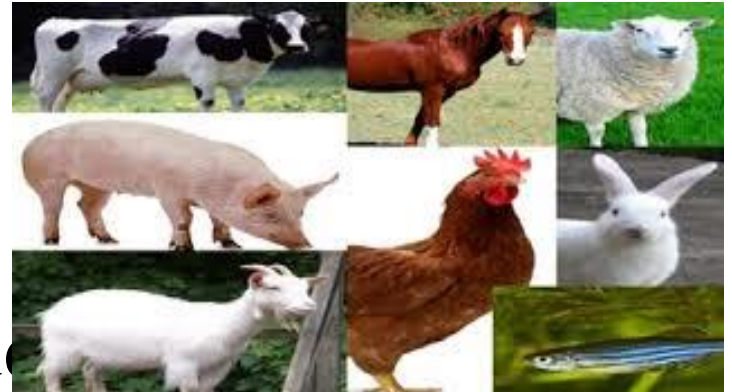
Livestock distribution and their importance in Indian economy.

❖ Overview

- Introduction
- Livestock animals
- Livestock distribution
- Role of livestock
- Livestock in Indian economy

❖ Livestock

➤ Livestock means stock that is live and is used for production of items for domestic consumption



➤ The term 'livestock' includes birds and other living creatures used for producing products for the use of man

❖ Livestock animals



Cattle



Buffalo

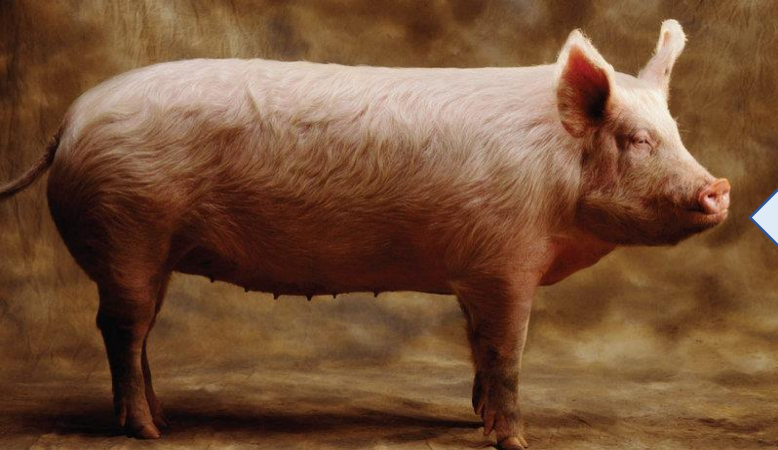
Cont....



**G
O
A
T**



**C
A
M
E
L**



**P
I
G**



**S
H
E
E
P**

❖ **Livestock distribution**

■ **In India**

- **Cattle - 193.46 million**
- **Buffalo - 109.85 million**
- **Goat - 148.88 million**
- **Sheep – 74.26 million**
- **Poultry – 851.81 million**

Cont....

- Total livestock population :- 536.76 million
- Total poultry population :- 851.81 million
- Total bovine population :- 303.76 million
- Milch animals :- 125.75 million

❖ 20th livestock census

➤ Cattle – 36.04 %

➤ Buffalo -20.47 %

➤ Sheep -13.83 %

➤ Goat – 27.74 %

➤ Pig – 1.69 %

Livestock census 20th

❖ Largest livestock population in India by species

- Cattle – West Bengal
- Buffalo – Uttar Pradesh
- Sheep – Telangana
- Goat – Rajasthan

Cont....

- Pig - Assam , Uttarpradesh
- Camel – Rajasthan , Gujarat
- Poultry – Tamilnadu, Andhrapradesh
- Donkey – Rajasthan , Uttarpradesh

❖ **Role of livestock**

- Livestock plays an important role in the economy of India.
- Livestock provides milk , meat and eggs for human consumption.
- Livestock also contributes to the production of wool , hair and leather.



Cont....

- Leather is the most important product which has a very high export potential
- Dung and other animal wastes serve as very good farm yard manure
- It is also used as fuel as like bio gas and dung cakes



➤ Livestock uses in draught power



www.alamy.com - CXWY75



❖ **livestock in Indian economy**

- Livestock sector contributes 4.11% GDP and 25.6% of total agriculture GDP in 2020-21
- About 20.5 million people depend upon livestock for their livelihood
- Livestock contributed 16% to the income of small farm households

Cont....

- India is number one milk producer in world
- India is producing about 187.75 million tones of milk in a year (2020-21)
- Per capita availability of milk in India is 394 gram/day (2020-21)

❖ Egg production

- India has the third place in egg production in the world
- It is producing about 103.32 billion of eggs
- Per capita availability of egg is 79 /year

❖ Meat production

- India has the fifth place in meat production in the world
- It is producing about 8.11 million tones of total meat in a year
- Per capita availability of meat is 6.52kg/year

Livestock census 20th

❖ Wool production

- India has 9th place in wool production in the world
- India is producing about 40.42 million kg per year
- Wool is obtained from sheep and goat

Livestock census 20th