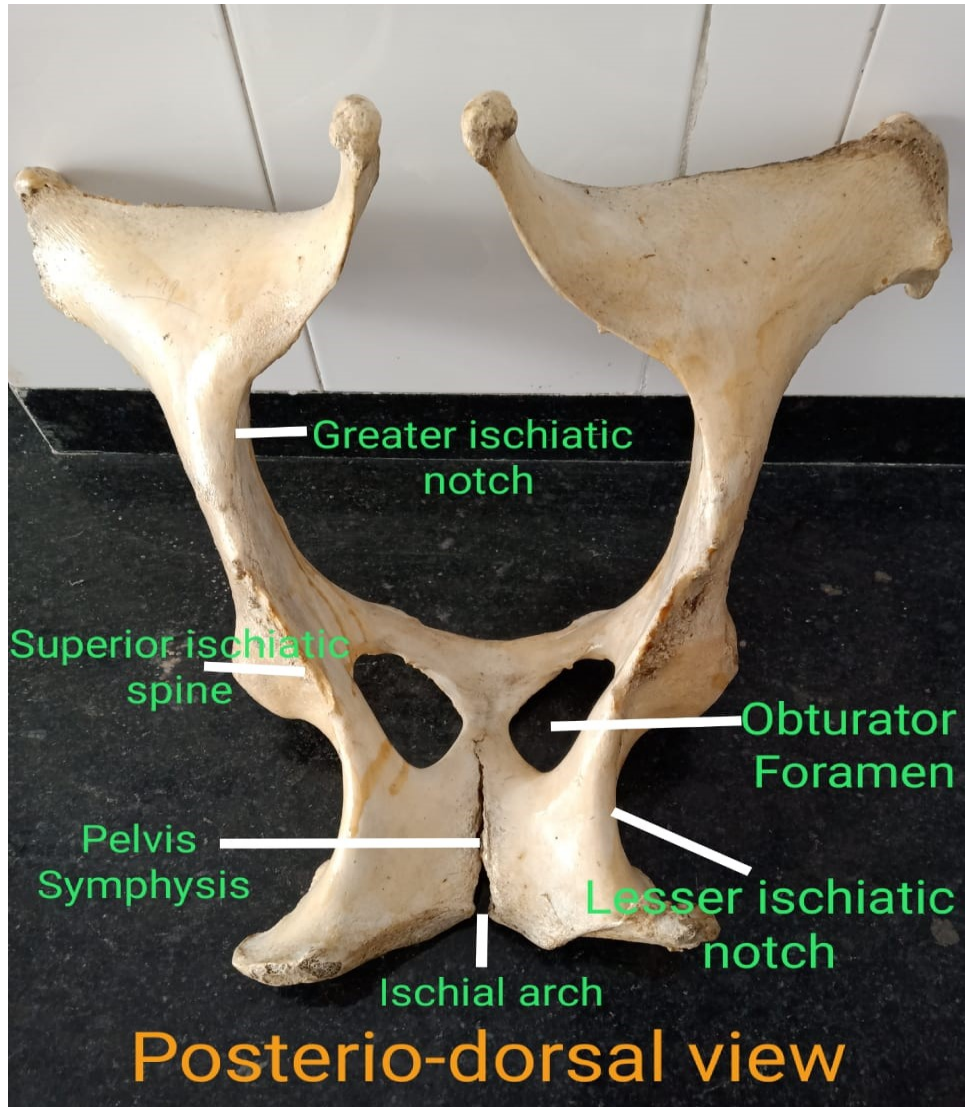
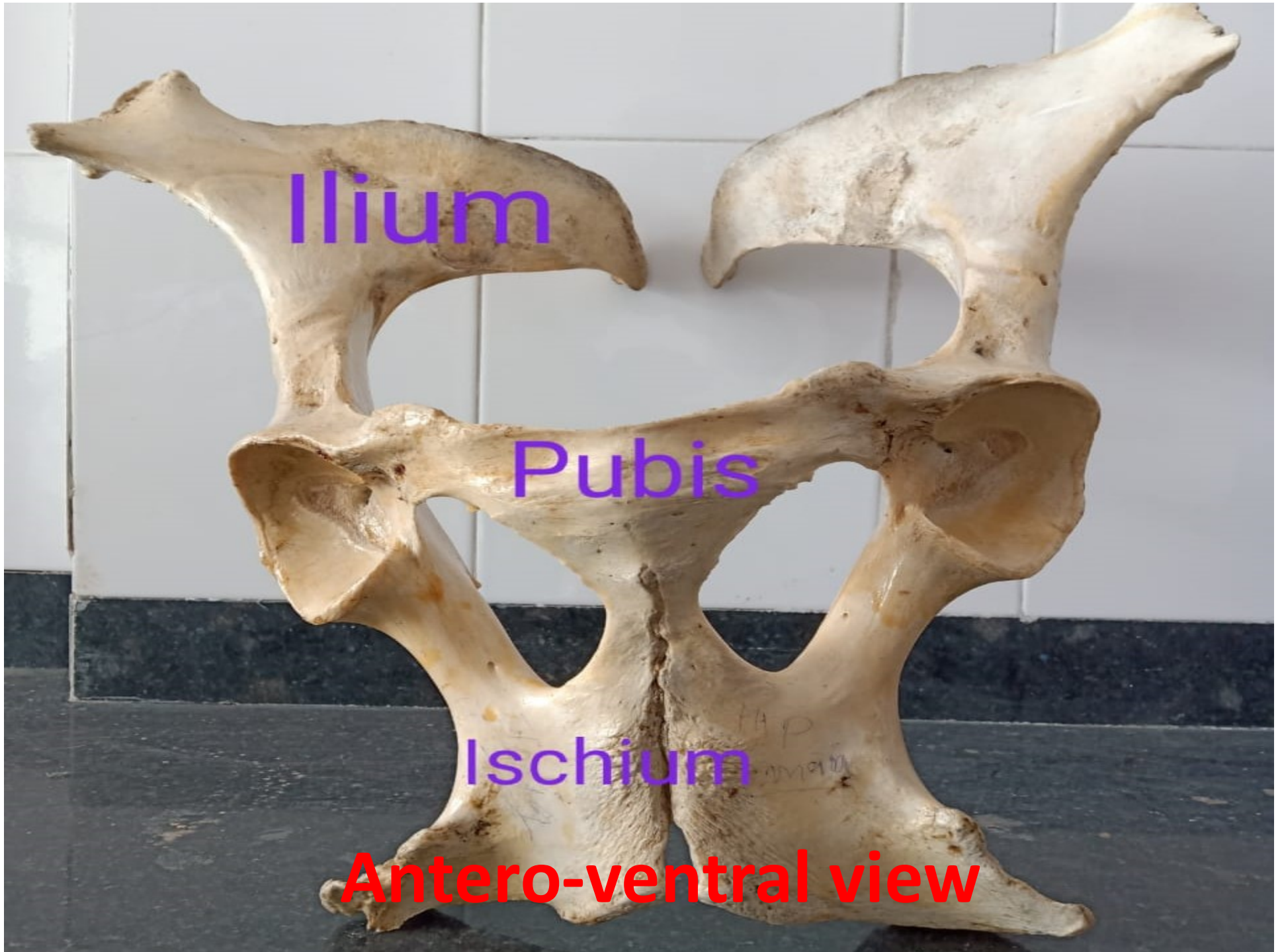


HIND LIMB [OS COXAE]



- This is a triangular flat bone situated at the Craniolateral aspect of the pelvis.
- It has two surfaces three angles and three borders.



Ilium

Pubis

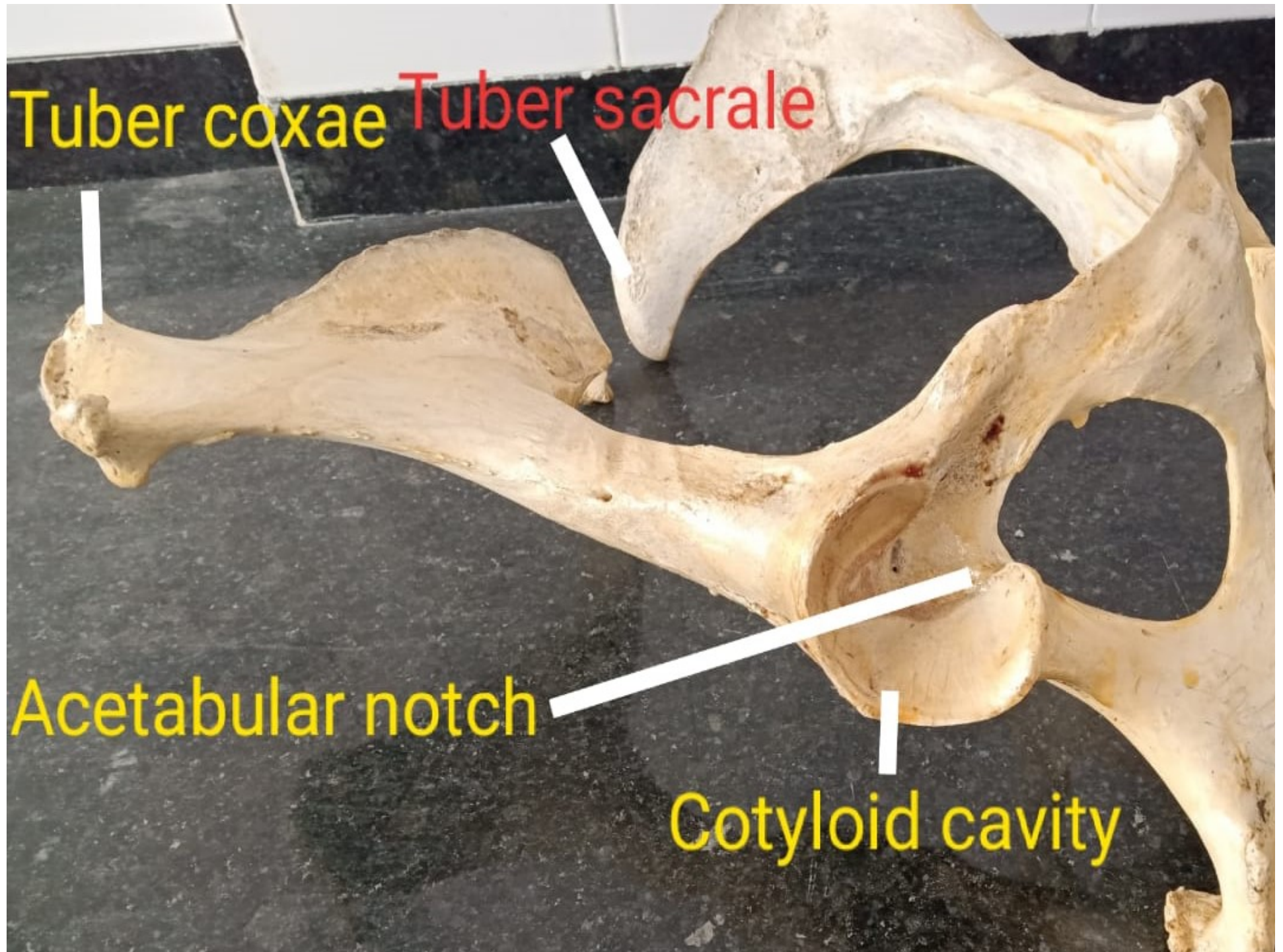
Ischium

Antero-ventral view

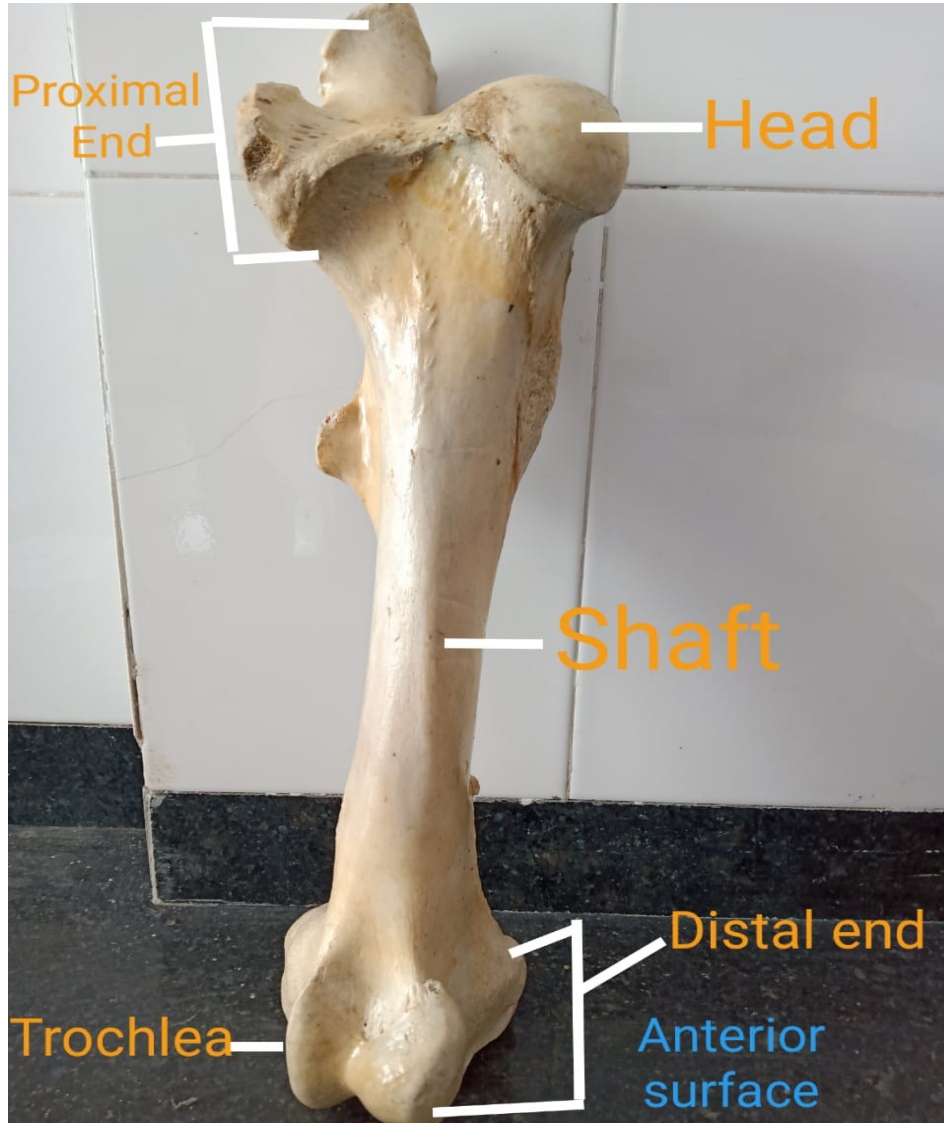
Tuber coxae Tuber sacrale

Acetabular notch

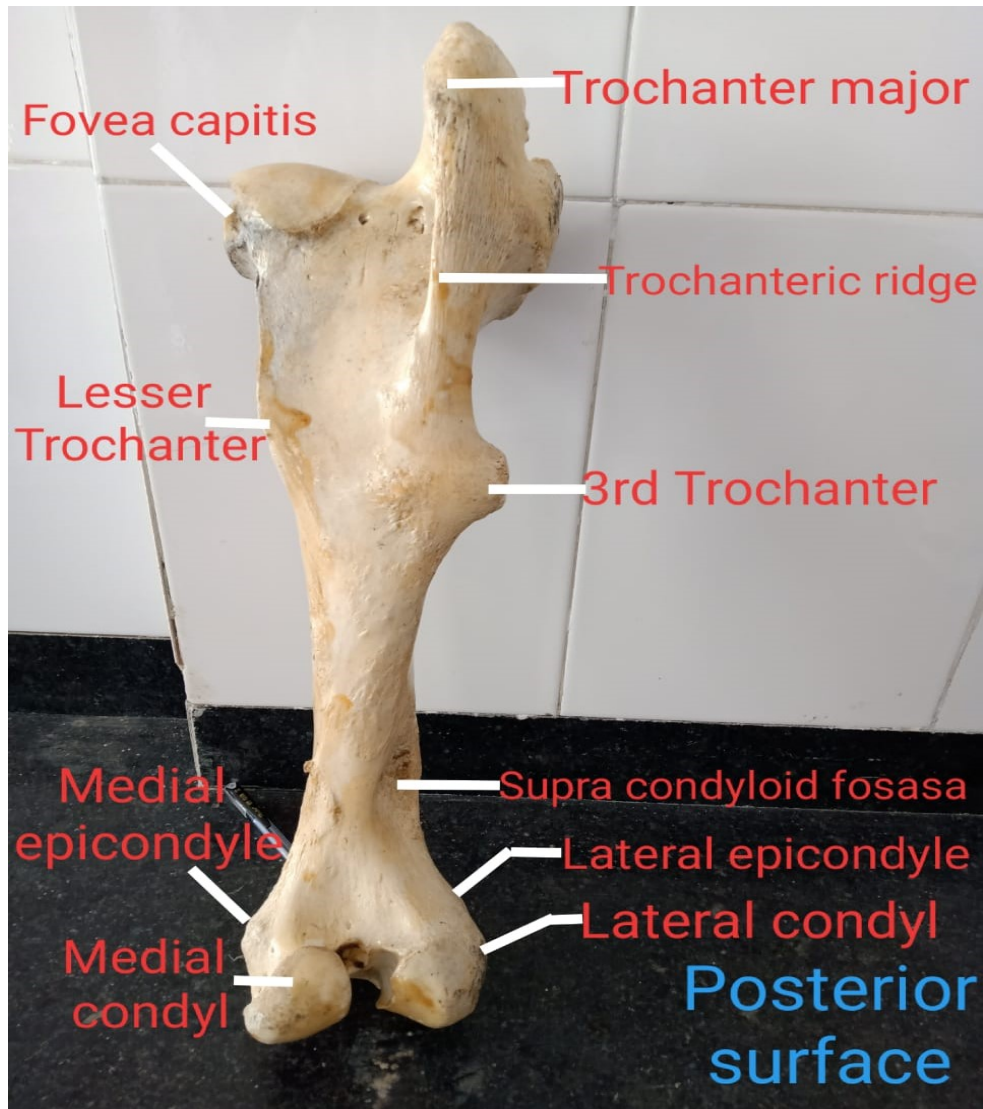
Cotyloid cavity



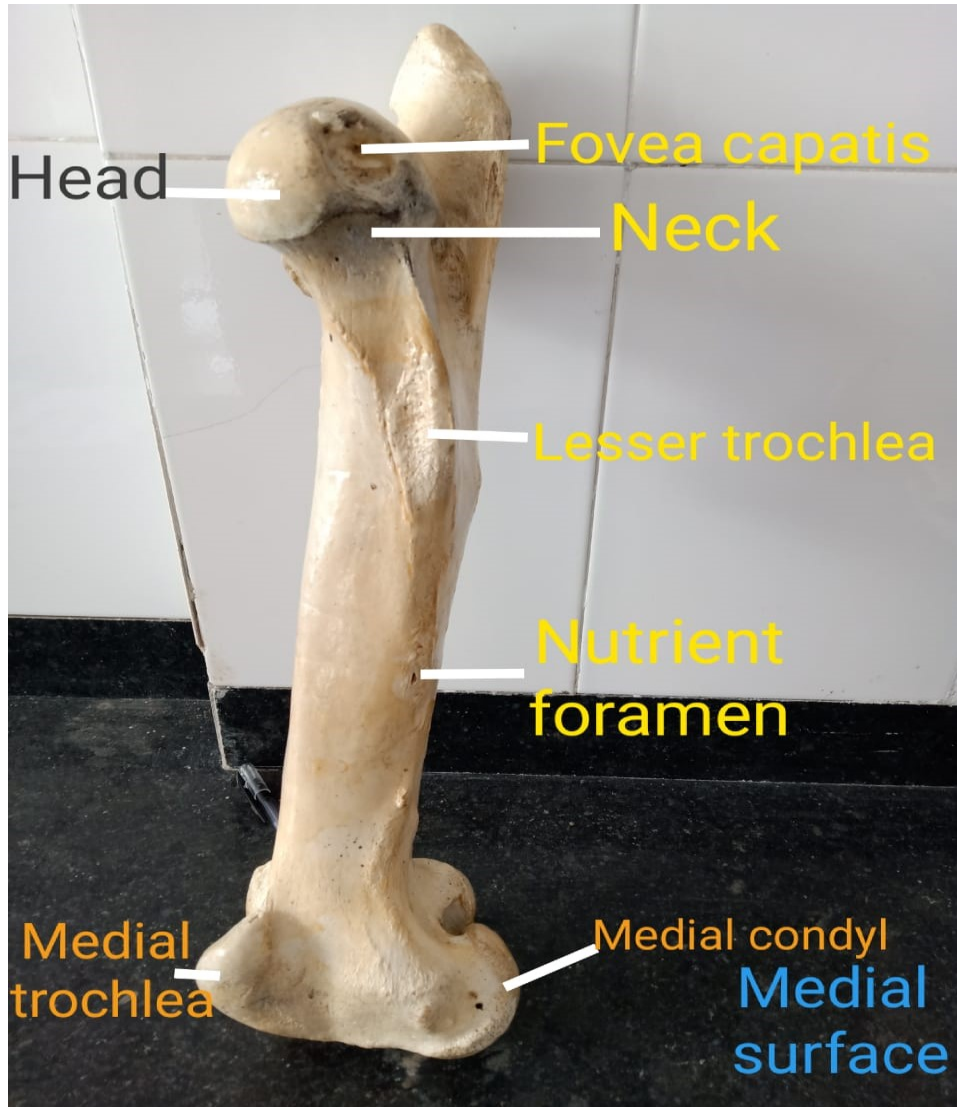
Femur



- It is cylindrical and the largest long bone in the skeleton.
- It is a Round Bone.



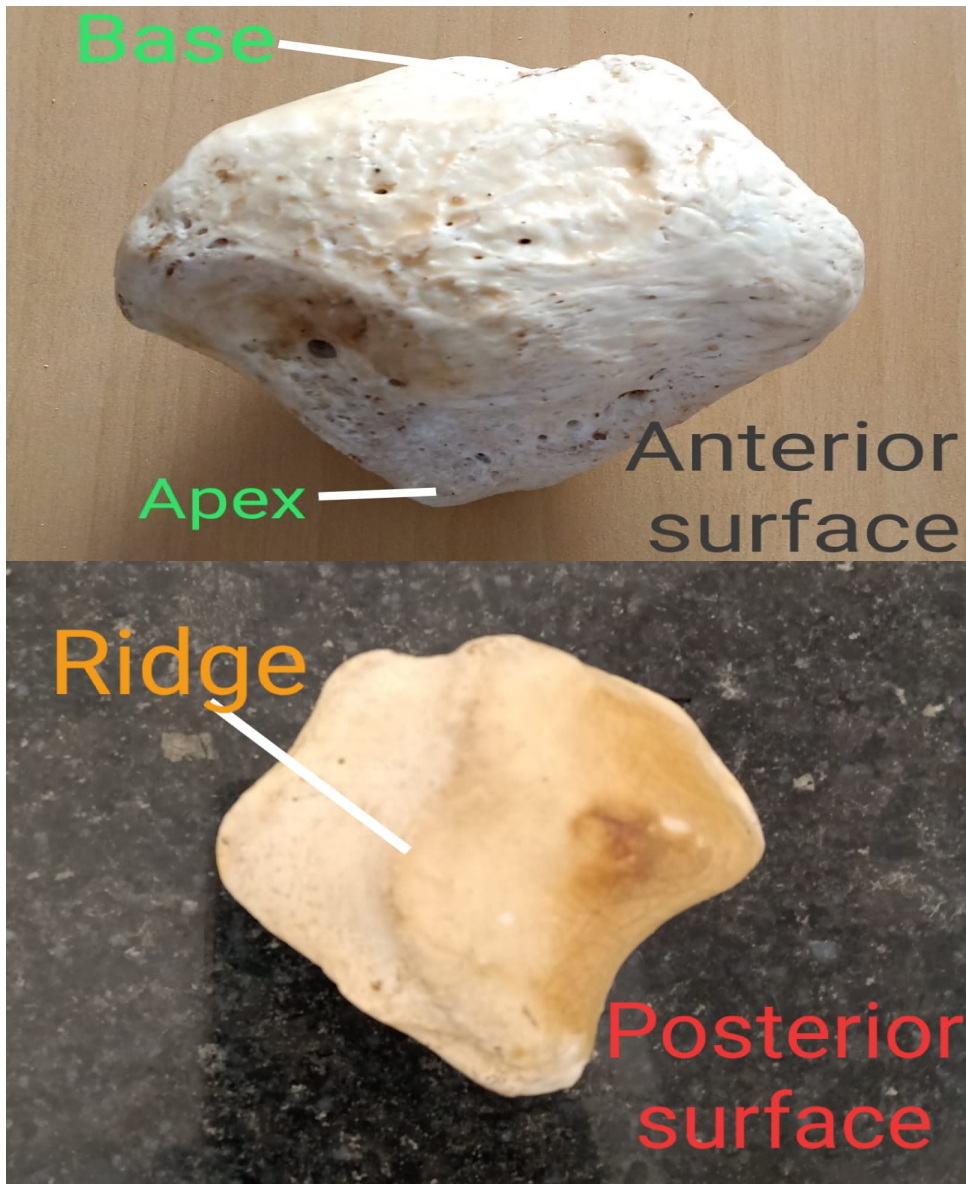
- The Upper end
Comprises of head
neck Greater
Trochanter
Trochanteric fossa
and Trochanteric
Ridge.
- There are known as
Fovea Capitis,



*The Upper part of the lateral border known as Third Trochanter in horse.

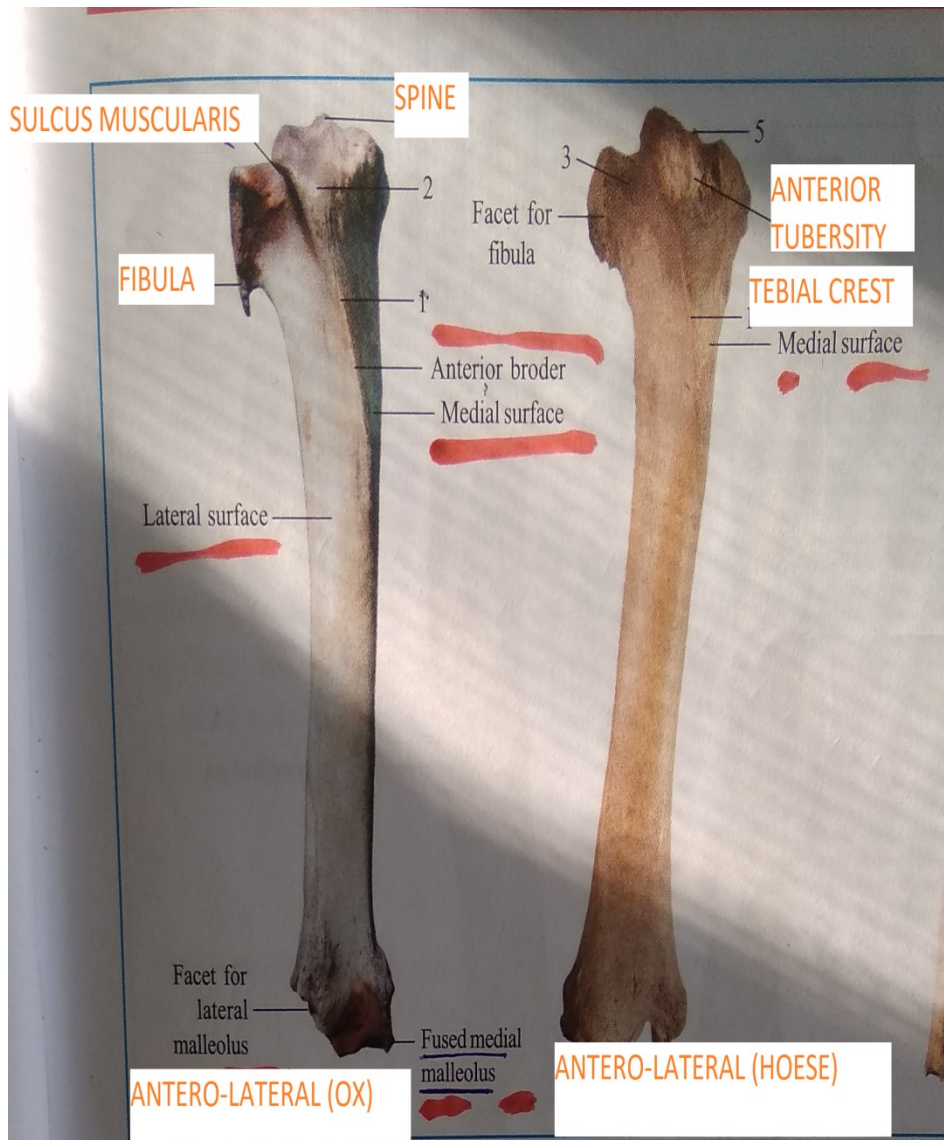
*Fovea capitis is deep and notched.

PATELLA



- It is a Triangular sesamoid bone of the Trochlea of Femur.
- IT has two surface three borders and three angles.

TIBIA AND FIBULA



- It is a strong and massive long bone.
- It presents a body and two ends.
- Fibula is rudimentary in ox

TARSAL BONES



- Tarsal bones are five in number in OX.
- Proximal Row there are two bones- the tibial tarsal and the fibular tarsal.

METATARSAL BONES

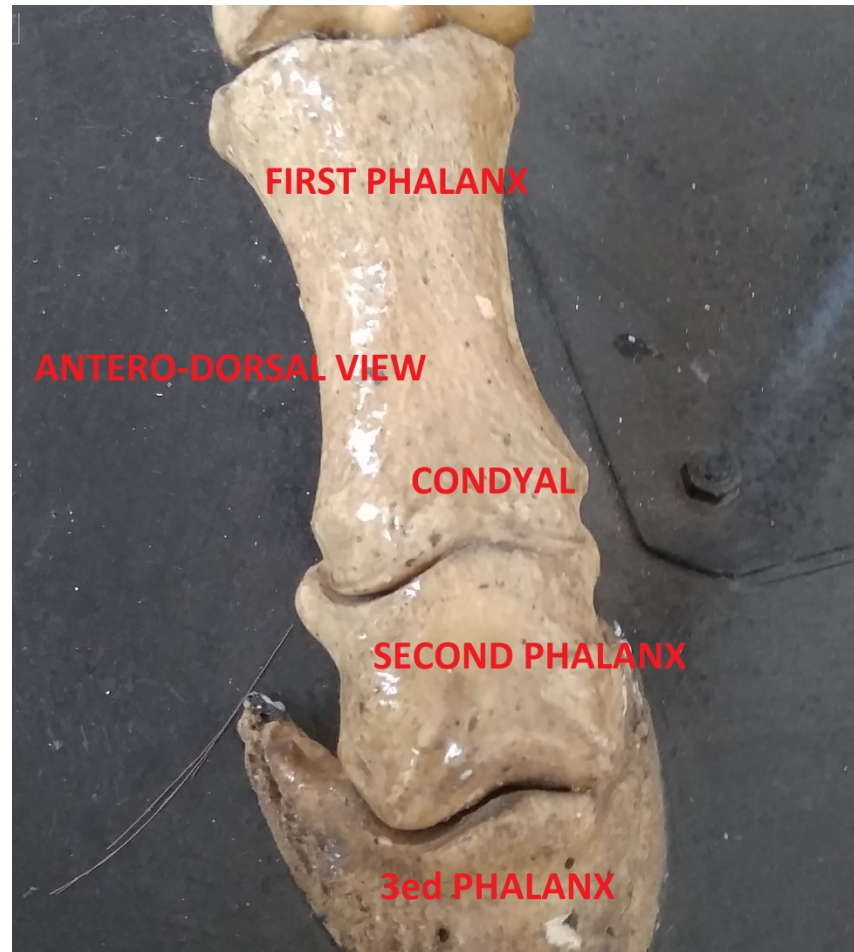


- LARGE METATARSAL BONES
- Length of metatarsal bone is more.
- Shaft is four sided

Small Metatarsal bone

- This medial small metatarsal bone is rudimentary in form.
- IT articulates with the large metatarsal bone

PHALANX



A white speech bubble sticker is centered on a corkboard background. The text "Thank you!!" is written in a black, casual, handwritten font. The word "Thank" is on the top line, and "you!!" is on the bottom line, slightly indented to the right. The corkboard has a natural, textured appearance with small, light brown granules.

Thank
you!!